



EVENTS & MICE



EVENTS & MICE

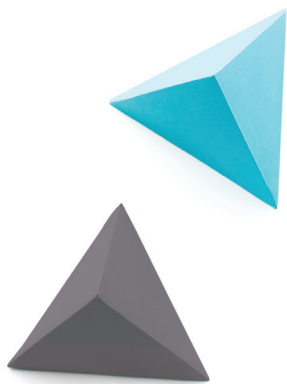
NEW WORLD BEIJING HOTELS

On the other hand, we denounce with righteous indignation and dislike men who are so beguiled and demoralized by the charms of pleasure of the moment, so blinded by desire, that they cannot foresee the pain and trouble that are bound to ensue; and equal blame belongs to those we like best.



No. 8 Qianian Da Jie, Chongwenmen, Dongcheng District,
Beijing 100062, China





In a free hour, when our power of choice is untrammelled and when nothing prevents our being able to do what we like best, every pleasure is to be welcomed and every pain avoided. In a free hour, when our power of choice is untrammelled and when nothing prevents our being able to do what we like best, every pleasure is to be welcomed and every pain avoided. When nothing prevents our being able to do what we like best, every pleasure is to be welcomed and every pain avoided.

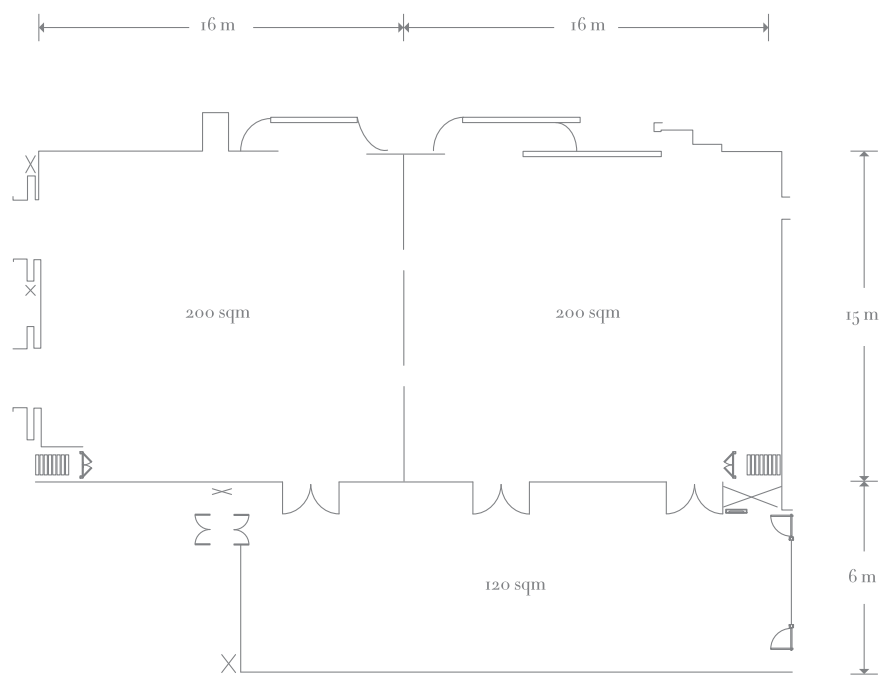
Gregor then turned to look out the window at the dull weather. Drops of rain could be heard hitting the pane, which made him feel quite sad. "How about if I sleep a little bit longer and forget all this nonsense", he thought, but that was something he was unable to do because he was used to sleeping on his right, and in his present state couldn't get into that position.



BALLROOM - *Ground floor*



The Ballroom is an elegant event space that you enter from its 220-square-metre reception area. During the day, the room receives natural sunlight through floor-to-ceiling windows, and after dark, variable lighting can set just the right mood. The 520-square-meter, pillar-free space can be used in its entirety or divided into two spaces of 260 square metres each, to accommodate 380 to 500 guests. Whether you're holding a large conference or a small party, there is a feeling of grandeur and gravity that adds weight to any occasion.



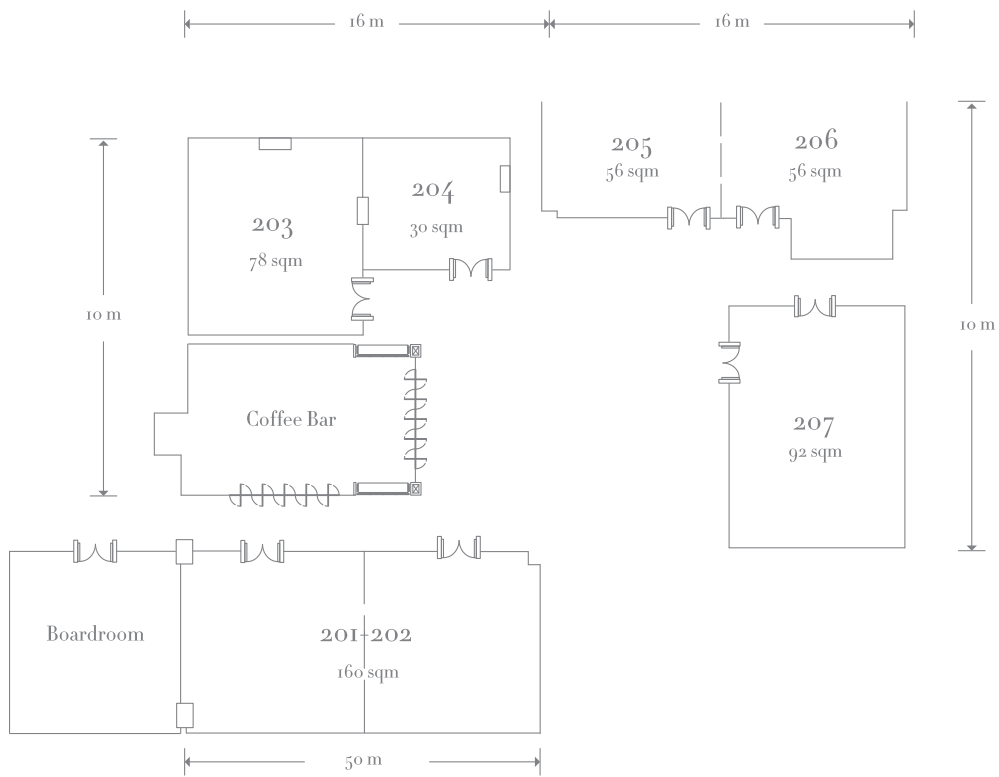
Function	Area(m ²)	Round Table	Long Table	Classroom	Boardroom	Theatre	Cocktail (standing)
Ballroom	520	380	380	360	360	360	500



GALLERY - *2nd floor*

The Gallery consists of seven multi-function rooms, ranging from 50 to 160 square metres, which can accommodate up to 100 guests. The attractively decorated Gallery overlooks a bustling street and features floor-to-ceiling windows that admit natural light. It connects to the 120-square-metre Gallery Coffee Bar that can be used for coffee breaks or as an event venue for up to 50 guests. This venue features a bar table, miniature show kitchen, wine cooler and Nespresso coffee machine, making it ideal for hosting a variety of social functions.

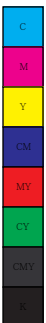




Gallery	Area(m ²)	Round Table	Long Table	Classroom	Boardroom	Theatre	Cocktail (standing)
201 + 202	160	84	40	48	48	48	100
203	78	36	20	36	36	36	36
204	30	10	N/A	10	10	10	N/A
205	52	20	20	20	20	20	40
206	60	20	20	20	20	20	40
205 + 206	112	60	50	36	36	36	80
207	92	60	60	48	48	48	70



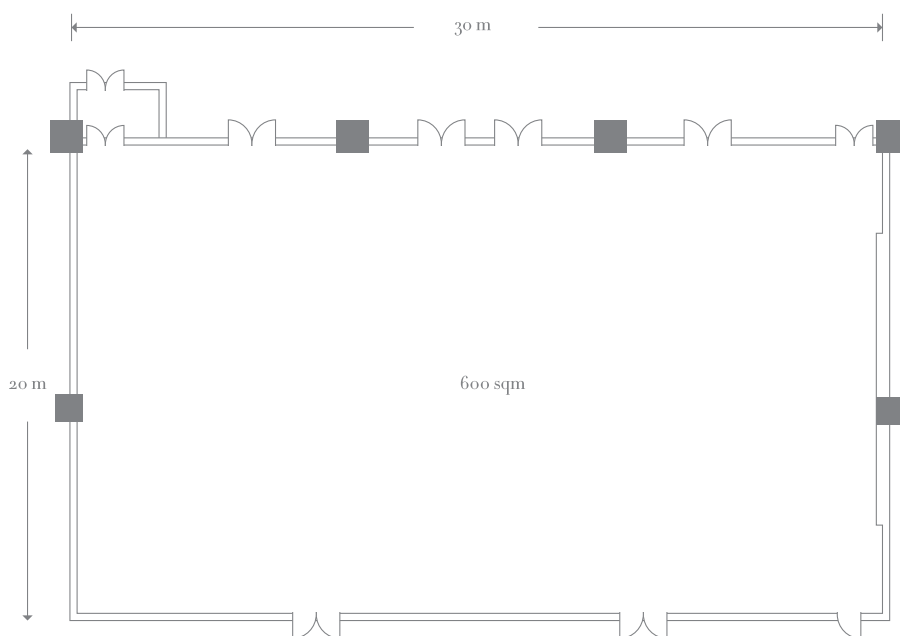






GALLERY - 2nd floor

The Ballroom is an elegant event space that you enter from its 220-square-metre reception area. During the day, the room receives natural sunlight through floor-to-ceiling windows, and after dark, variable lighting can set just the right mood. The 520-square-meter, pillar-free space can be used in its entirety or divided into two spaces of 260 square metres each, to accommodate 380 to 500 guests. Whether you're holding a large conference or a small party, there is a feeling of grandeur and gravity that adds weight to any occasion.

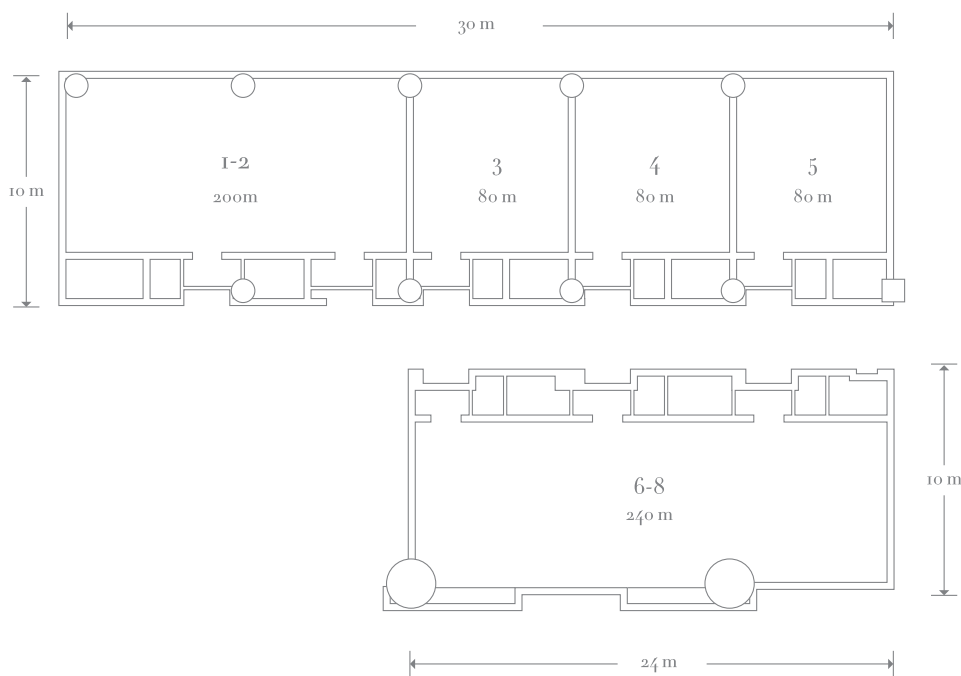


Function	Area(m ²)	Round Table	Long Table	Classroom	Boardroom	Theatre	Cocktail (standing)
Ballroom	520	380	380	360	360	360	500

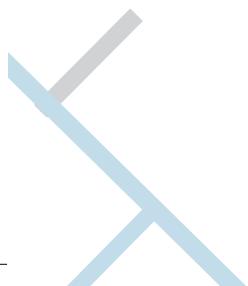


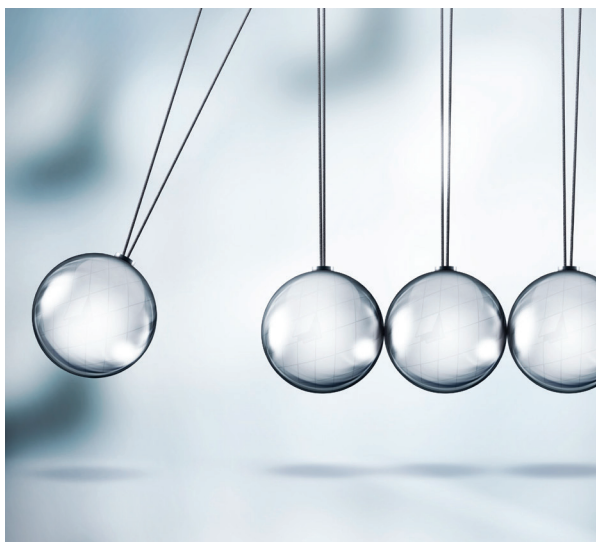
BALLROOM - *Ground floor*

The Ballroom is an elegant event space that you enter from its 220-square-metre reception area. During the day, the room receives natural sunlight through floor-to-ceiling windows, and after dark, variable lighting can set just the right mood. The 520-square-meter, pillar-free space can be used in its entirety or divided into two spaces of 260 square metres each, to accommodate 380 to 500 guests. Whether you're holding a large conference or a small party, there is a feeling of grandeur and gravity that adds weight to any occasion.



Function	Area(m ²)	Round Table	Long Table	Classroom	Boardroom	Theatre	Cocktail (standing)
Ballroom	520	380	380	360	360	360	500









NOTE



NEW WORLD
BEIJING HOTEL

