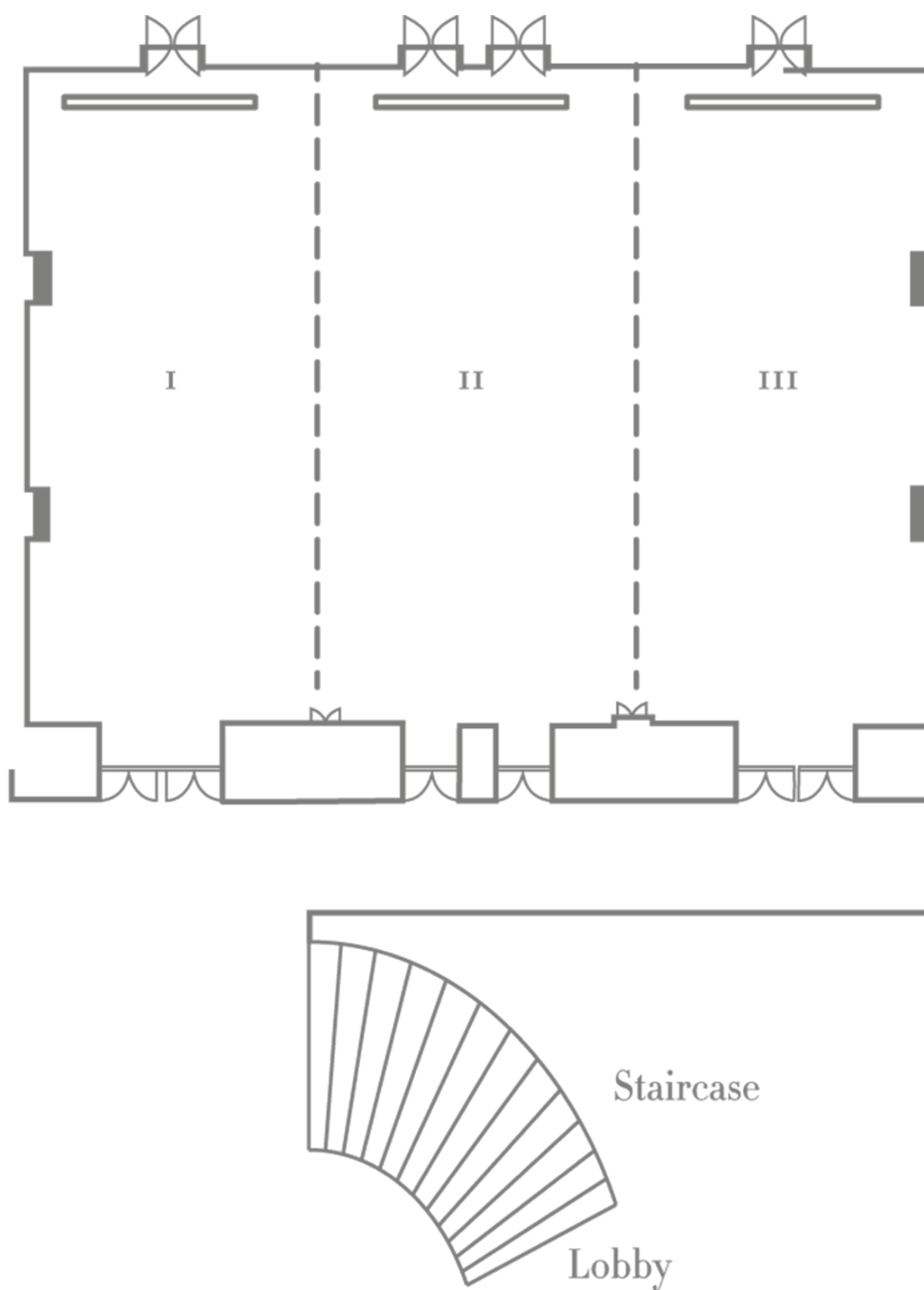


FLOOR PLAN

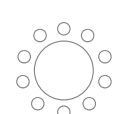
BALLROOM - SECOND FLOOR

From social events to grand functions, the hotel's 675-square meter Ballroom handles them easily, and its seven-meter ceiling creates a feeling of space and grandeur. Its earthy and neutral tones are an ideal setting for an array of event themes and motifs. Up to 500 guests can be accommodated for banquets, and as many as 800 for cocktails. Our expert events specialist is available to help you plan memorable and meaningful milestones and celebrations.



Capacity (no. of guests)

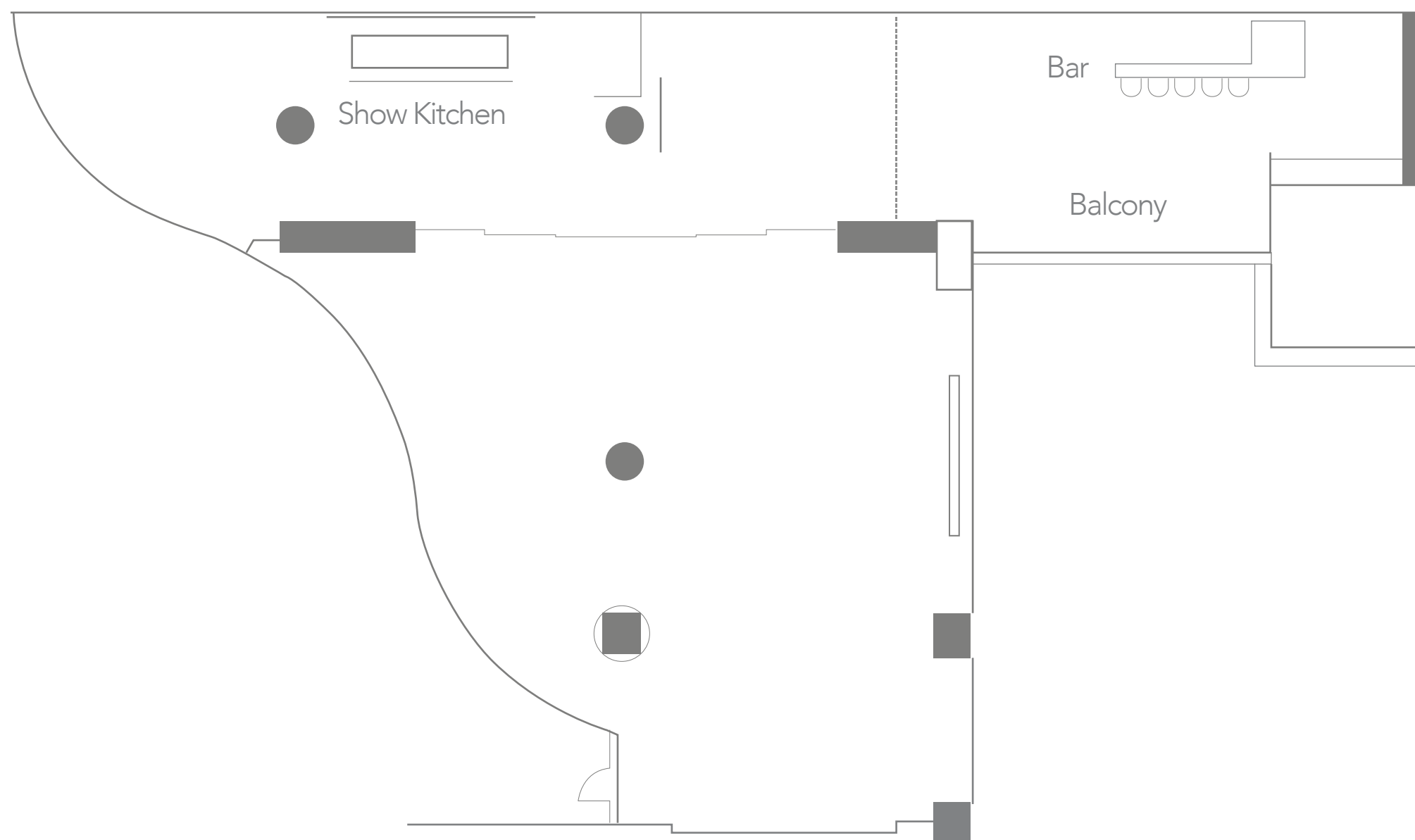
Ballroom	Area (m2)	Round	Cocktail
I to III	675	500	800
I, II, III (each)	225	120	150



(Seating is based on the standard capacity of the function space.)

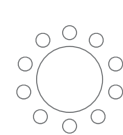
GLASSHOUSE - SECOND FLOOR

The 156-square meter circular Glasshouse creates an atmospheric mood for intimate gatherings, small weddings, media launches, and social events with natural light streaming in through full-height glass walls and a lovely view over the Lagoon. Connected to a fully functional show kitchen and bar, the Glasshouse can provide an enhanced dining and banqueting experience in an exclusive alcove.



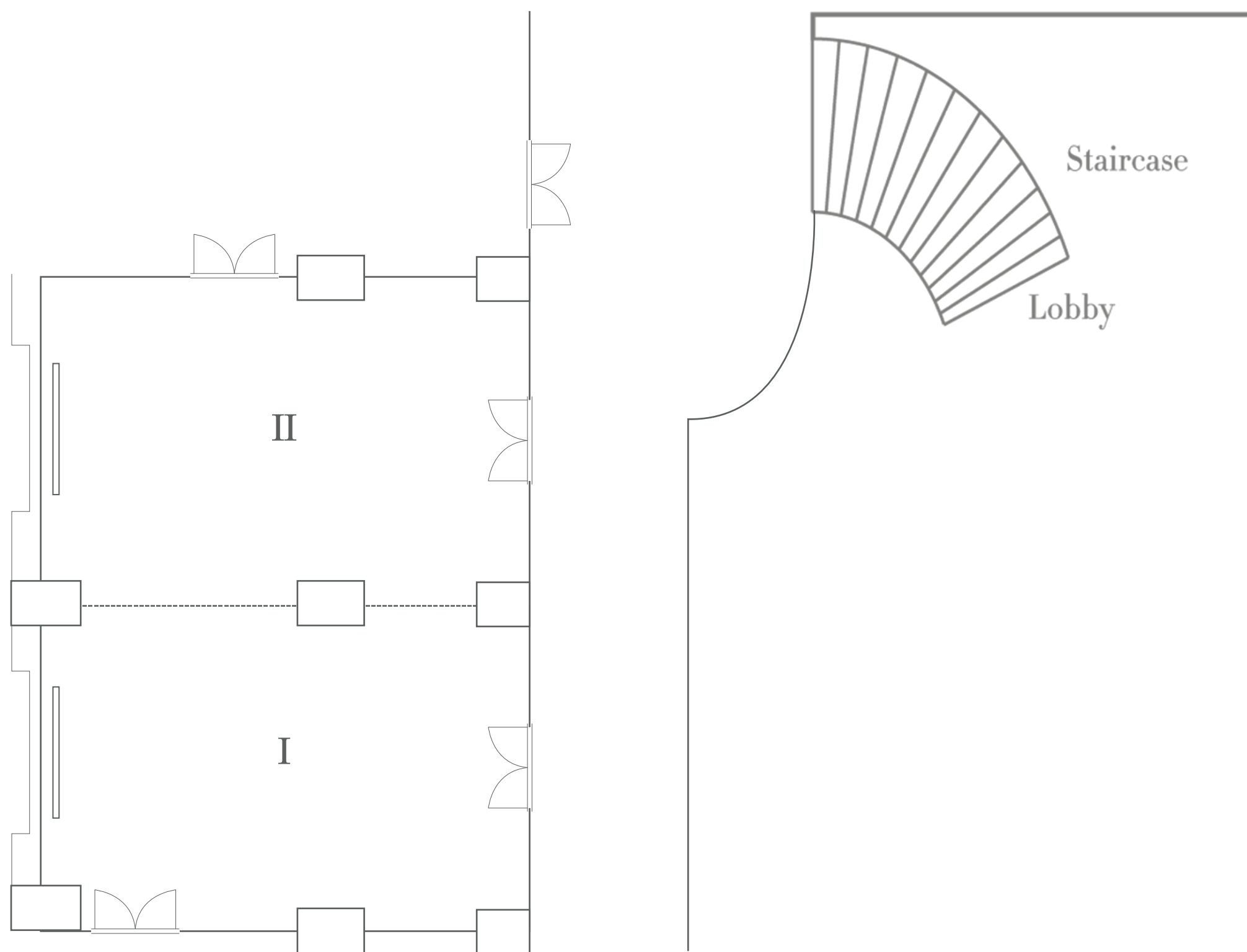
Capacity (no. of guests)

Function	Area (m2)	Round	Cocktail (standing)
Glasshouse	156	80	120



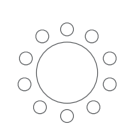
BALCONY - SECOND FLOOR

The Balcony is a versatile space that can accommodate a variety of social events. With two combinable 104-square meter sections, it allows utmost flexibility for 20 up to 50 guests and is easily accessible as it is situated across the lobby and staircase.



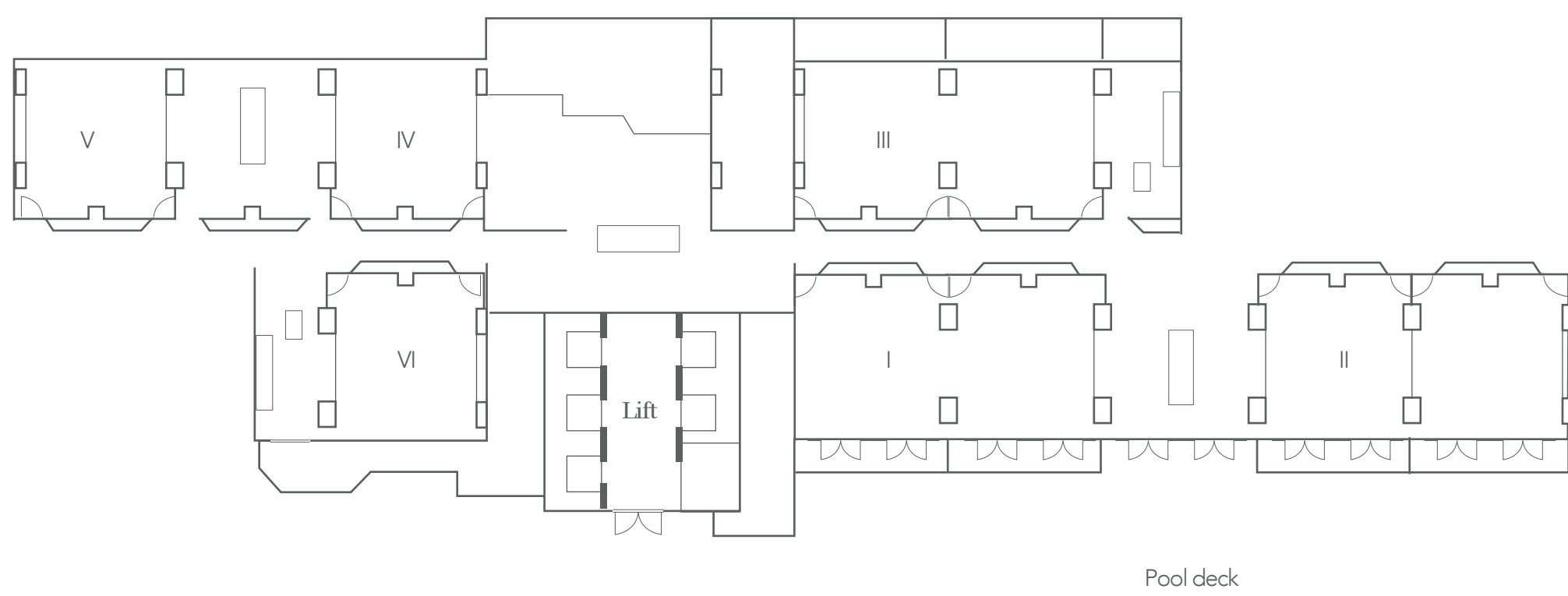
Capacity (no. of guests)

Balcony	Area (m2)	Round	Cocktail (standing)
I	104	40	50
II	104	40	50



PRESS ROOM - FOURTH FLOOR

Our six Press Rooms, ranging from 50 to 108 square meters, offer layouts ideal for cocktail parties, intimate wedding receptions, and similar events. The rooms also have a buffet area where guests can relax and mingle. Floor-to-ceiling windows allow natural light to brighten the space and provide an outdoor view of the poolside or the city, making the venue a great place to host day-to-night functions.



Capacity (no. of guests)

Press Room	Area (m ²)	Round	Cocktail (standing)
I	108	64	80
II	105	64	80
III	108	64	80
IV	50	32	40
V	50	32	40
VI	50	32	40
I & II (with Pool deck)	300	-	180

