

About

New World Saigon Hotel is ideally situated in the heart of Ho Chi Minh City, making it a perfect location for guests to explore the city and its local hidden gems. Within the modern 520 guestrooms are contemporary suites, surprising discerning discoveries with a bustling city view, fitness and leisure amenities, and epicurean choices from five-star culinary chefs unveiling Sài Gòn treasures. Whether it be a productive conference, a culinary escapade, or a luxurious stay, New World Saigon is the place to be for any occasion.

Location

Within the vibrant business hub of District 1, with easy access to many landmarks, museums, and cultural centers of Ho Chi Minh City; the hotel is positioned opposite the lush 23rd September Park. Just seven kilometers from Tan Son Nhat International Airport and steps away from the bus station, the hotel is adjacent to the famous Ben Thanh Market. A private limousine service is available to take you to all the major tourist destinations for a fee.

Guest Rooms And Suites

	Total	(Sqm)
Deluxe Room	163	29
Deluxe With Balcony	12	38
Premier Room	212	29
Residence Club Premier	121	30
Deluxe Suite	5	70
Executive Suite	17	75
Director Suite	2	91
Presidential Suite	1	181

Guest Room Features

- Electronic room key and in-room safe deposit box
- Individually controlled air-conditioning
- LCD TV with satellite / cable television and movie channels
- Bathroom with bathtub or shower, hairdryer and toiletries
- WiFi Internet access
- IDD telephone and voicemail
- 24-hour in-room dining
- Mini-bar
- Tea and coffee
- Nespresso coffee machines (in Residence Club Rooms & Suites)
- Local phone calls are free.



NEW WORLD
SAIGON HOTEL



Residence Club Privileges

- Private Residence Club Living Room to lounge, relax, and socialize
- Complimentary buffet breakfast, evening cocktails and non-alcoholic refreshments throughout the day
- One-hour use of one conference room per day
- Pressing of one suit or one dress per stay

Health Club & Spa

• Fitness Center

Overlooking a private garden and offering free weights, cardio, and high-tech equipment, the hotel's fitness center is the perfect place to inspire you to attain your health and fitness goals.

• Coco Spa

At CocoSpa, professional therapists are on hand to further ease all of your tension with a body and foot treatment package. This spa is not operated by New World Saigon Hotel.

Restaurants & Bars

• Parkview Café

130 seats



Named after the verdant park in front, Parkview serves up seasonal fresh seafood buffets and a blend of Mediterranean and Vietnamese cuisine.

• Whisper Bar & Lounge

70 seats



A charming enclave offers a wide selection of fine wines and handcrafted cocktails.

• Black Vinegar

140 seats



A marvel of gastronomy achieved by fusing Vietnamese ingredients and Cantonese techniques.

• Splash Bar

100 seats



A laid-back bar by the hotel pool serves snacks and a wide range of cocktails, beers, spirits, wines, as well as mocktails.

• Ibuki

The teppanyaki restaurant Ibuki provides authentic Japanese food. This restaurant is not operated by New World Saigon Hotel.



Reservations

For inquiries, please contact our hotel at reservations.saigon@newworldhotels.com or visit our website at the QR code below. Scan to discover more about New World Saigon Hotel

Meeting & Banqueting Facilities

New World Saigon Hotel offers over 2,000 sqm of unique and functional event spaces, including three ballrooms, four multi-function rooms and the biggest outdoor event venues in Ho Chi Minh City, offering a wide range of venues for both businesses and social events.

Meeting Equipment & Service

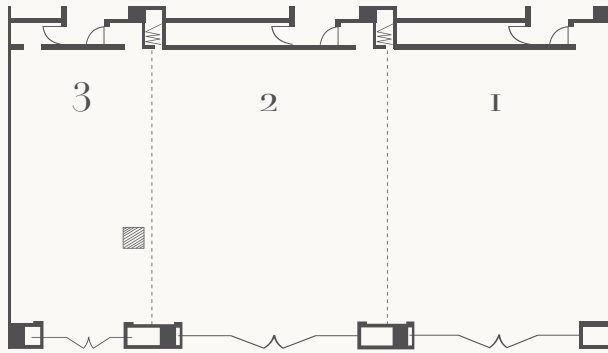
Telephone conference facilities, built-in screens and projectors, portable screens, PA systems, programmable light controls, wireless internet access, wired microphones, and more. Our professional team from event management, culinary, and service makes everyone feel welcome and looks after them like family.

Capacity (no. of people)

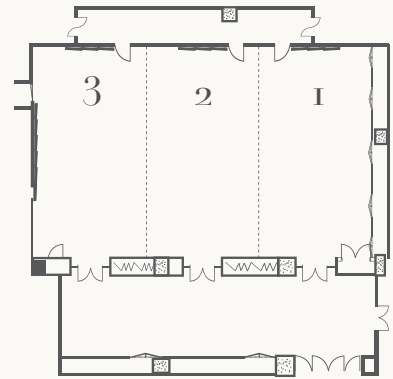
Function	Area (m ²)	U-shape	Banquet	Hollow	Theatre	Classroom	Cocktail
Ben Thanh Grand Ballroom	422	180	372	100	550	300	650
Mekong Ballroom	300	150	288	80	408	216	450
Indochine	200	100	180	45	220	140	350
Garden 1	55	18	48	18	30	18	
Garden 2	30			12			
Club Board Room	81	21	36	18	40	30	50
Terrace (outdoor)	745		400				500
Garden (outdoor)	486		144				250



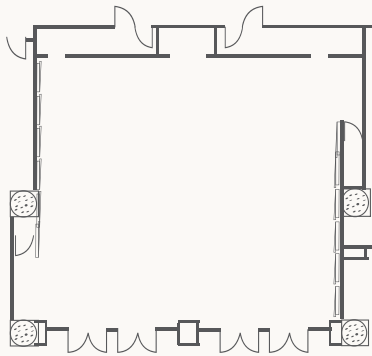
Ben Thanh Grand Ballroom
(1st Floor)



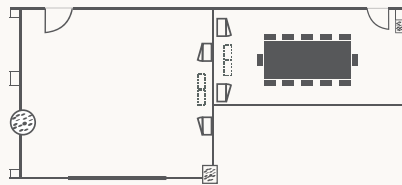
Mekong Ballroom
(1st Floor)



Indochine
(1st Floor)

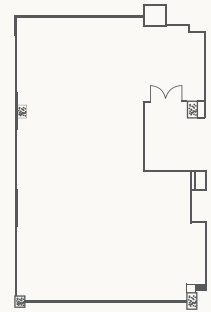


Garden 1
(1st Floor)

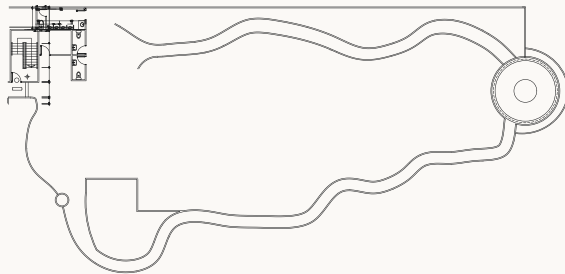


Garden 2
(1st Floor)

Club Boardroom
(10th Floor)



Terrace
(2nd Floor)



Garden
(2nd Floor)

