



Santa Magical Treats



Ginger House (Big)



Ginger House (Big)



Ginger House (Small)



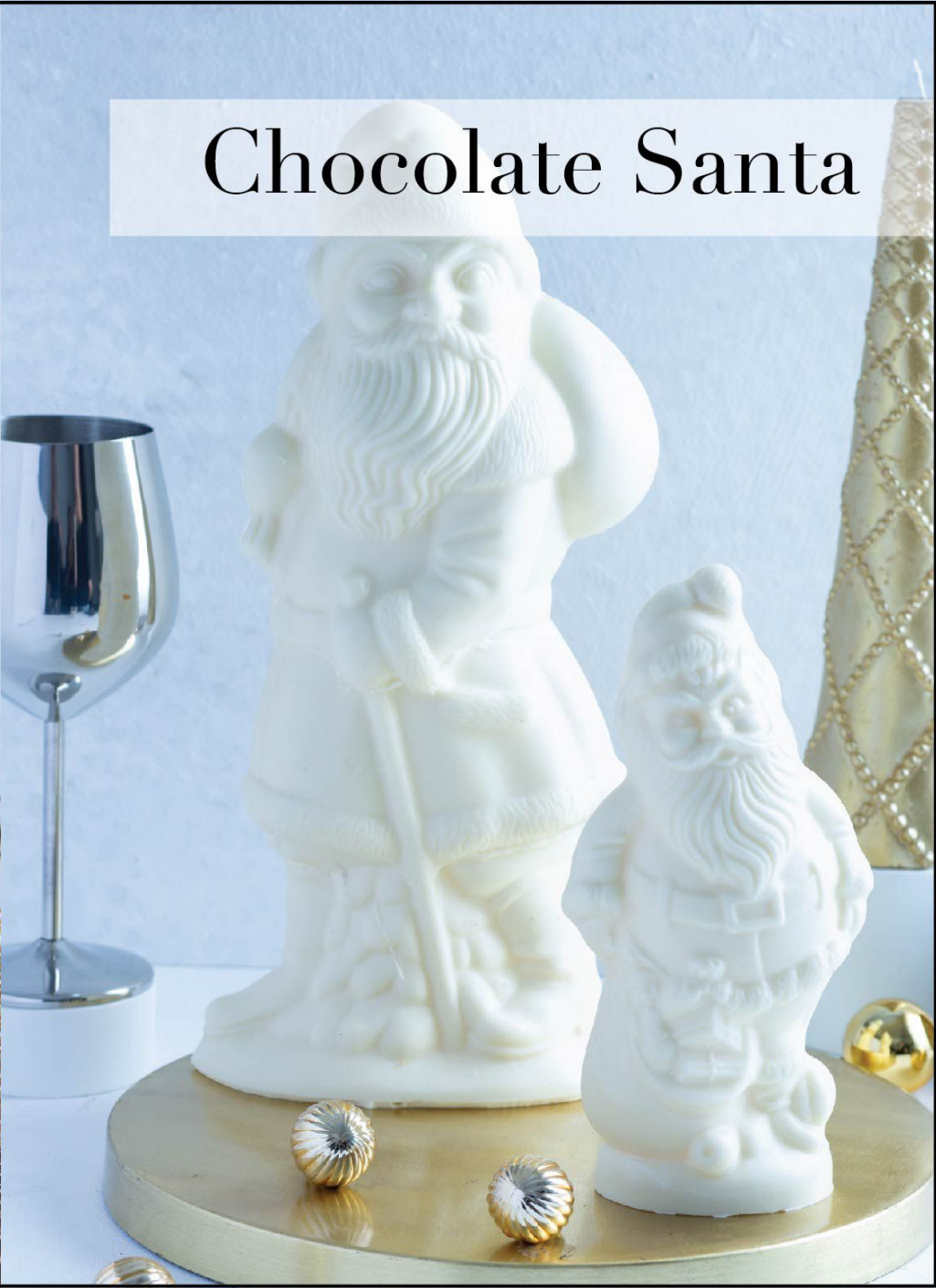
Christmas Cookies (set)



Christmas Cookies (jar)



Chocolate Santa



Chocolate Yule Log



White Chocolate Yule Log



Jasmine Hazelnut Chocolate



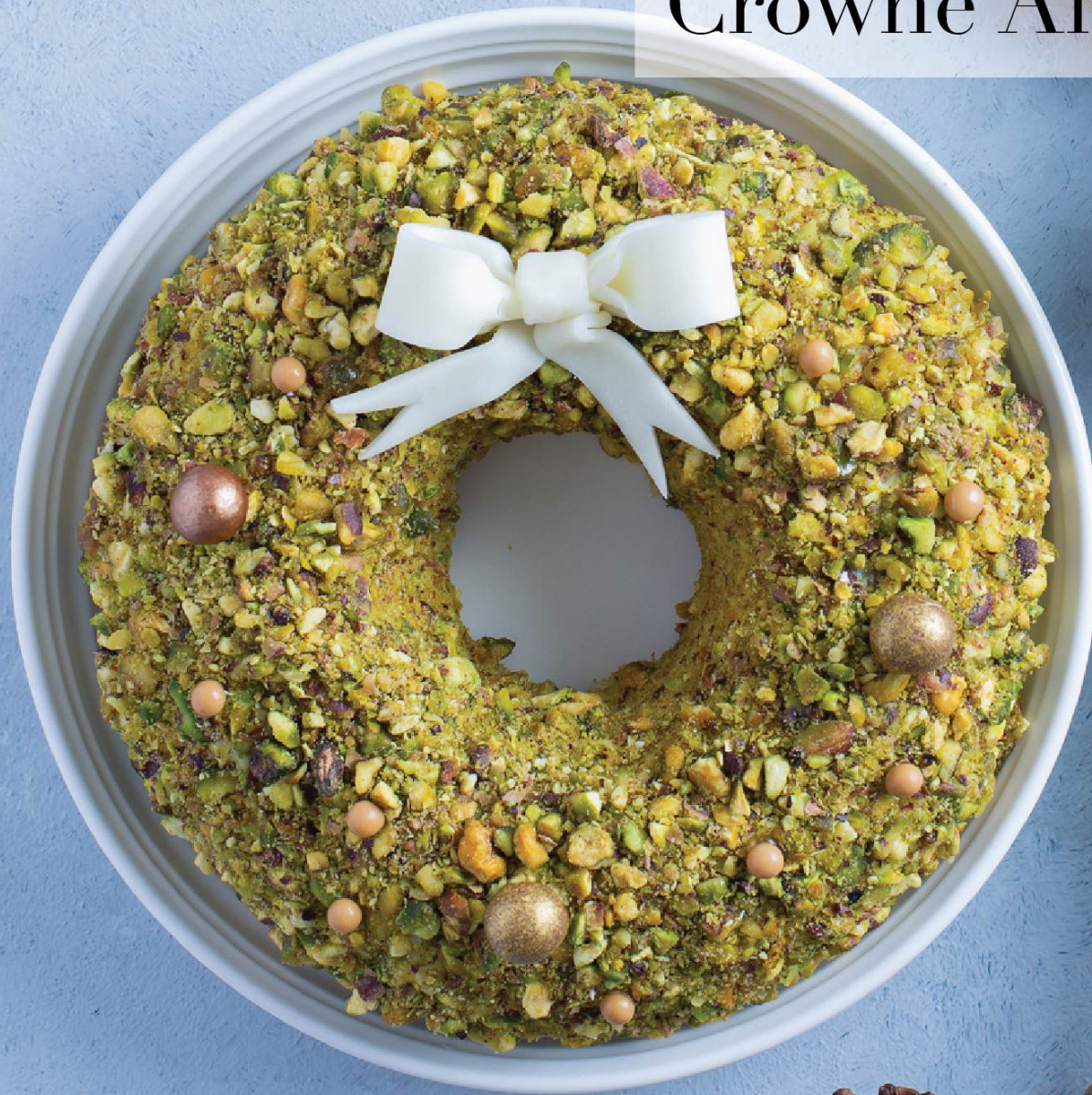
Poppy Seed Doughnut



Raspberry Chocolate Mousse



Crowne Almond Cheery



Mango Lemon Mousse



Panatonne



A close-up photograph of a slice of stonlen bread, a traditional Swedish Christmas cake. The slice is served on a white ceramic plate with gold-colored cutlery (a fork and a knife). The bread is topped with a fresh sprig of rosemary and is dusted with white powdered sugar. The background is a light blue-grey surface decorated with several Christmas ornaments: a large silver one, a smaller gold one, and a smaller silver one. In the upper right corner, there are some dried pinecones. The overall aesthetic is clean and festive.

Stonlen