

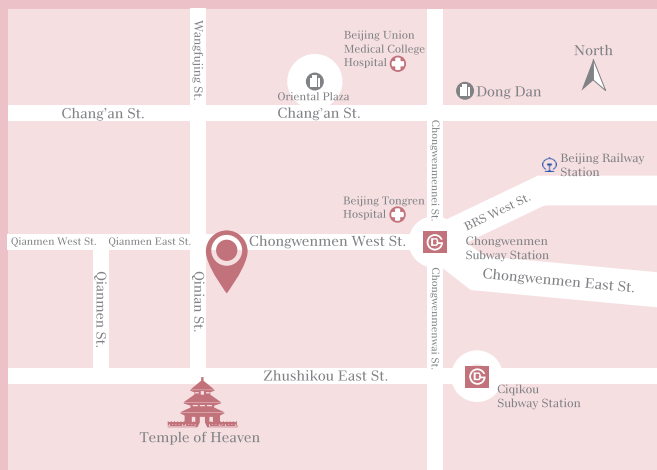
A minimalist, monochromatic image featuring two champagne flutes. The flutes are positioned vertically, with their stems meeting at the bottom and their bowls flaring outwards. The background is a soft, light gray gradient. In the center of the space between the two flutes, the words "OCCASIONS" and "CELEBRATIONS" are stacked vertically in a clean, sans-serif font. A thin, elegant ampersand symbol is placed between the two words, partially overlapping them.

OCCASIONS
&
CELEBRATIONS

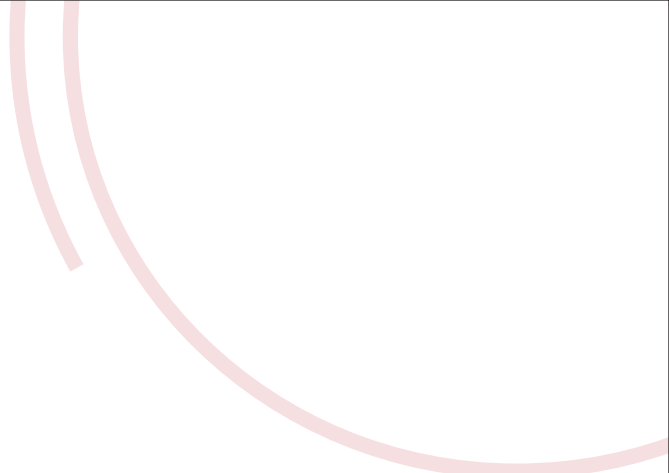
OCCASIONS CELEBRATIONS

NEW WORLD BEIJING HOTEL

New World Beijing Hotel, located in Wangfujing, is the ideal place to host meetings, events and weddings for up to 600 guests. Our versatile venues, culinary expertise and meticulous planning ensure each event is a spectacular success.



8 Qianian Street, Chongwenmen, Dongcheng District,
Beijing 100062, China



Whether your dream is a grand banquet, an intimate reception on the terrace, or something totally unique, we can make your perfect wedding a reality. We offer a variety of venues that can be designed to your taste, and our spacious venues can be configured to accommodate up to 600 guests. Our experienced team will plan your day with you and when everything is just the way you'd like, we will see to every detail to ensure that your day is truly memorable.

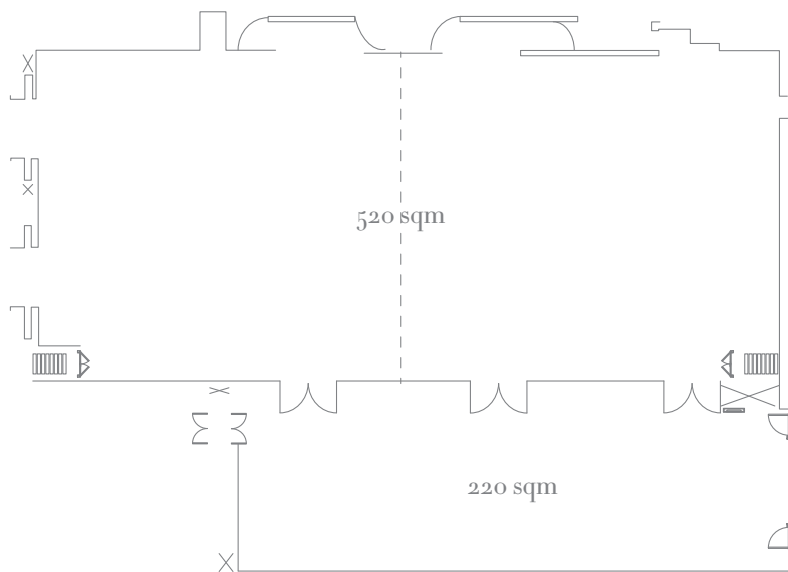
The Residence Club's 1,000-square-metre terrace is the largest outdoor space among the capital's deluxe hotels. The terrace is available for private events or celebrations for up to 200 guests. It is a perfect place to relax and socialise with a cocktail while admiring the view.



THE BALLROOM - *2nd floor*



The Ballroom is an elegant event space that includes a 220-square-metre pre-function area. During the day, the room receives natural sunlight through floor-to-ceiling windows, and after dark, variable lighting can set just the right mood. The 520-square-meter, pillar-free space can be used in its entirety or divided into two spaces of 260 square metres each, to accommodate 580 to 600 guests. Whether you're holding a large conference or a small party, there is a feeling of grandeur and gravity that adds weight to any occasion.



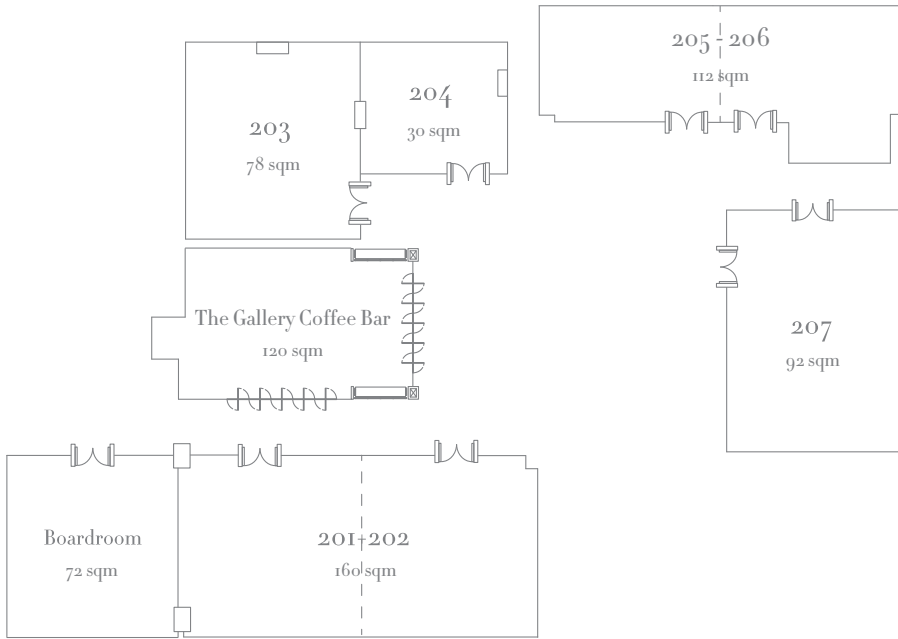
Function	Area (sqm)	Round Table	Long Table	Ceremony (seated)	Cocktail (standing)
Ballroom	520	380	336	600	500



THE GALLERY - *2nd floor*

The Gallery consists of seven multi-function rooms, ranging from 50 to 160 square metres, which can accommodate up to 100 guests. The attractively decorated Gallery overlooks a bustling street and features floor-to-ceiling windows that admit natural light. It connects to the 120-square-metre Gallery Coffee Bar that can be used for coffee breaks or as an event venue for up to 50 guests. This venue features a bar table, miniature show kitchen, wine cooler and Nespresso coffee machine, making it ideal for hosting a variety of social functions.





Gallery	Area (sqm)	Long Table	Round Table	Ceremony (seated)	Cocktail (standing)
201 + 202	160	108	80	168	168
203	78	54	40	72	72
204	30	N/A	10	N/A	N/A
205	52	48	20	45	50
206	60	48	30	72	72
205 + 206	112	108	60	120	120
207	92	72	60	96	96







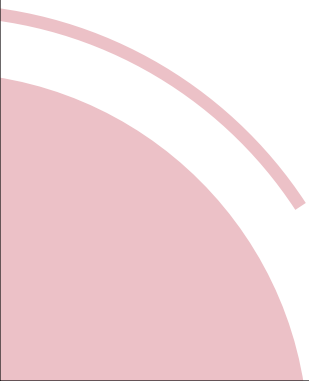


RESIDENCE CLUB TERRACE - 10th floor

For private celebrations or special events, the 1,000-square-metre terrace is the largest outdoor space of any of the city's deluxe hotels, and is a perfect place to relax and socialise with a cocktail while admiring the view. Open fireplaces at the terrace provides a warm ambiance and keeps everyone toasty during the winter months.

Function	Area (sqm)	Long Table	Ceremony (seated)	Cocktail (standing)
Terrace	1,000	144	120	200





NOTE

