

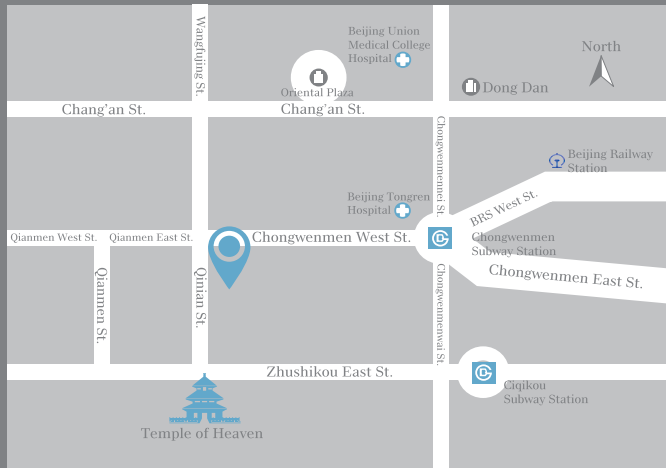


EVENTS & MICE

EVENTS & MICE

NEW WORLD BEIJING HOTEL

New World Beijing Hotel, located in Wangfujing, is the ideal place to host meetings, events and weddings for up to 600 guests. Our versatile venues, culinary expertise and meticulous planning ensure each occasion is a spectacular success.



8 Qnian Street, Chongwenmen, Dongcheng District,
Beijing 100062, People's Republic of China



New World Beijing Hotel has 1,542 square metres of multi-functional event space, which can host up to 600 guests for unforgettable events from cocktail parties, corporate conferences to wedding banquets. Each venue features state-of-the-art technology, and our professional planners and culinary team will tailor each event to the client's specific needs. On the day of the event, our gracious team will ensure every guest feels welcomed and look after.

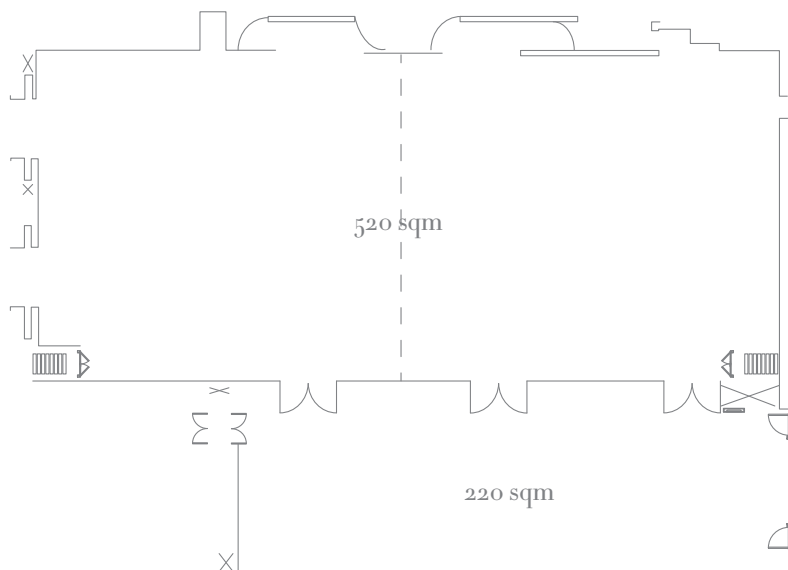
We committed to making every conference, event and celebration extraordinary. Three beautifully designed spaces can be connected and configured to accommodate a variety of events of different sizes and our experienced team takes pride in overseeing every detail to ensure that everything is perfect.



THE BALLROOM - *2nd floor*



The Ballroom is an elegant event space that includes a 220-square-metre pre-function area. During the day, the room receives natural sunlight through floor-to-ceiling windows, and after dark, variable lighting can set just the right mood. The 520-square-metre, pillar-free space can be used in its entirety or divided into two spaces of 260 square metres each, to accommodate 380 to 600 guests. Whether you're holding a large conference or a small party, there is a feeling of grandeur and gravity that adds weight to any occasion.



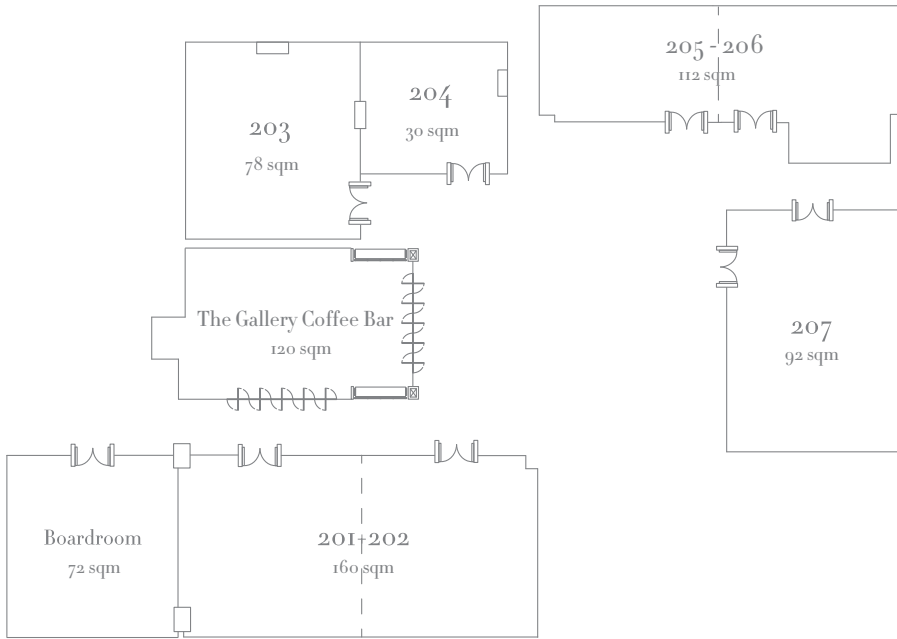
Function	Area (sqm)	Round Table	Long Table	Classroom	Boardroom	Theatre	Cocktail (standing)	U Shape	Hollow Square
Ballroom	520	380	336	260	96	600	500	118	126



THE GALLERY - *2nd floor*

The Gallery consists of seven multi-function rooms, ranging from 30 to 160 square metres, which can accommodate up to 100 guests. The elegantly decorated Gallery overlooks a bustling street and features floor-to-ceiling windows that admit natural light. It connects to the 120-square-metre Gallery Coffee Bar that can be used for coffee breaks or as an event venue for up to 50 guests. This venue features a bar table, miniature show kitchen, wine cooler and Nespresso coffee machine, making it ideal for hosting a variety of social functions.





Gallery	Area (sqm)	Round Table	Long Table	Classroom	Boardroom	Theatre	Cocktail (standing)	U Shape	Hollow Square
201 + 202	160	80	108	90	54	168	168	42	48
203	78	40	54	48	18	72	72	24	30
204	30	10	N/A	12	12	N/A	N/A	N/A	N/A
205	52	20	48	30	18	45	50	22	24
206	60	30	48	36	18	72	72	22	24
205 + 206	112	60	108	75	48	120	120	50	54
207	92	60	72	54	24	96	96	30	36







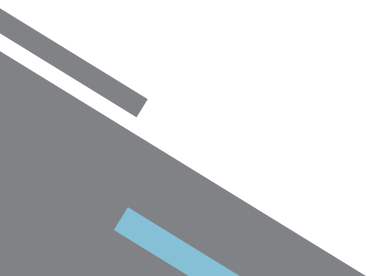


RESIDENCE CLUB TERRACE - 10th floor

For private celebrations or special events, the 1,000-square-metre terrace is the largest outdoor space of any of the city's deluxe hotels, and is a perfect place to relax and socialise with a cocktail while admiring the view. Open fireplaces at the terrace provides a warm ambiance and keeps everyone toasty during the winter month.

Function	Area (sqm)	Long Table	Ceremony (seated)	Cocktail (standing)
Terrace	1,000	144	120	200







NOTE

